

Manchester's 10 Point COVID-19 Action Plan : August 2020

(Refreshed 14 August 2020)

Introduction

This plan for August 2020 is an integral part of the Manchester Prevention and Response Plan, endorsed by the Health and Wellbeing Board on 8th July 2020.

Following the announcement on Thursday 30th July of the new restrictions and the declaration on Sunday 2nd August of a major incident relating to Greater Manchester, the need for enhanced action is now fully understood.

The 10 point COVID-19 Action Plan mirrors the national and Greater Manchester approach with a focus on the following:

1. Data and intelligence (point number 1)
2. Testing (point number 2)
3. Contact tracing (point number 3)
4. Contain measures (points 4-7)
5. Planning ahead (points 8-10)

Sir Richard Leese
Leader of the Council
Chair of the Manchester Health and Wellbeing Board

Councillor Bev Craig
Executive Member for Adult Health and Wellbeing
Manchester City Council

Joanne Roney OBE
Chief Executive
Manchester City Council

David Regan
Director of Public Health
Manchester City Council

Fiona Worrall
Strategic Director Neighbourhoods
Manchester City Council

Katy Calvin-Thomas
Acting Chief Executive
Manchester Local Care Organisation

Ian Williamson
Chief Accountable Officer
Manchester Health and Care Commissioning

Sir Mike Deegan
Chief Executive
Manchester University NHS Foundation Trust

Neil Thwaite
Chief Executive
Greater Manchester Mental Health Trust

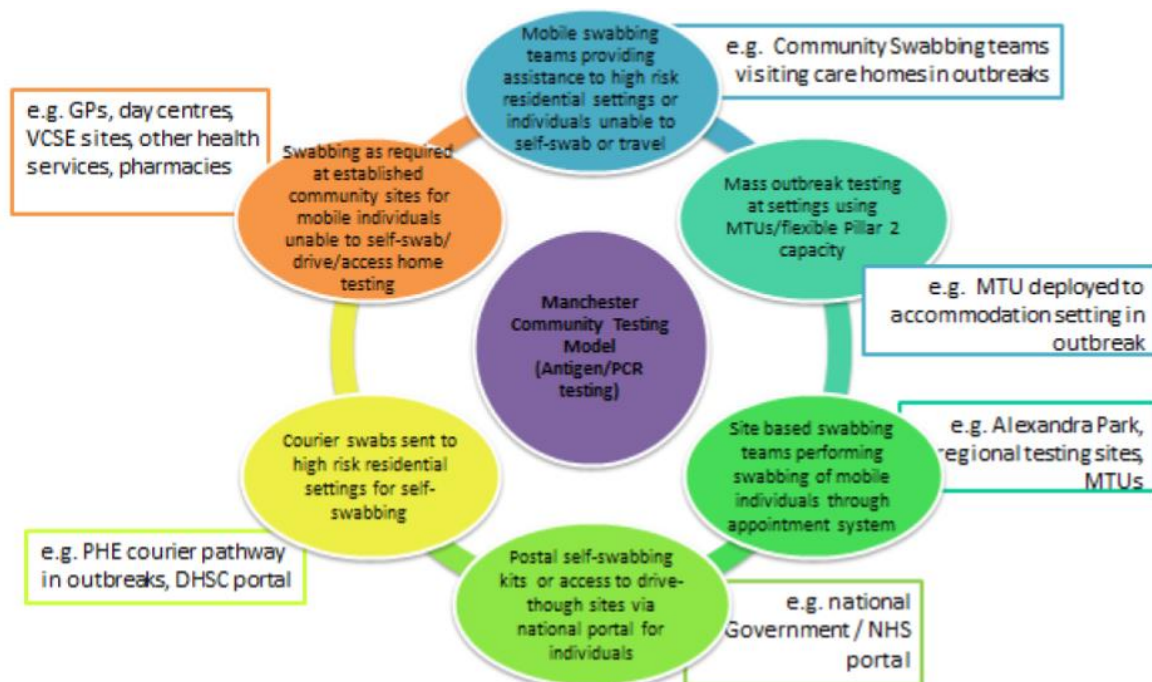
The Manchester COVID-19 Response Group (Health Protection Board) is a multi-agency partnership that will oversee the implementation of this plan and key decisions will be escalated to Manchester Gold Control chaired by Joanne Roney, Chief Executive, Manchester City Council. For any further information about this plan please contact (d.regan@manchester.gov.uk).

1. Ensure that strategic and operational decisions in respect of COVID-19 are informed consistently by high quality data and intelligence

- Incorporate GM COVID-19 escalation framework metrics within the Manchester COVID-19 early warning dashboard, specifically the weekly incidence rate, positivity rate, Clinical Assessment Service (CAS) call increase, hospitalisations and inpatient diagnoses.
- Use the detailed record level data available within the Public Health England COVID-19 Situational Awareness Explorer and other datasets to continually develop our understanding of the transmission (new cases) and prevalence of COVID-19 in particular geographical areas, age groups and local communities, including ethnic and faith-based groups and occupations
- Support the work of the COVID-19 Health Equity Manchester Group and other activities to understand and address the differential impact of COVID-19 on individuals and communities within Manchester

Lead: Neil Bendel, (Public Health Specialist (Health Intelligence))

2. Increase access to and uptake of testing



- Implement Manchester’s Community Testing Model for antigen testing of symptomatic residents to ensure that everyone who needs a test can get a test with a focus on:
 - Further collaboration with Manchester University NHS Foundation Trust (MFT) to capitalise on Pillar One Testing arrangements and the deployment of the Manchester Local Care Organisation (MLCO) Swabbing Team to settings, with care homes remaining a priority;

- Ensuring capacity at the Etihad and Manchester Airport regional testing centres is utilised
- Continuing to maximise the use of the successful Mobile Testing Units (MTUs) at FC United and Ukrainian Centre (4 sessions of 3 days each planned in August)
- Establishing a number of fixed testing sites across the City that are accessible on foot and can be used for Mobile Testing Units (MTU) or Local Testing Site (LTS) walk-in models. Three sites have initially been identified for this purpose; Abraham Moss Leisure Centre, Central Retail Park, and Brownley Road Car Park (near Wythenshawe Forum and town centre). The sites are walking distance from areas with a high footfall and high density population, and they relate to Manchester's high rate areas
- Identifying and approving a number of responsive testing sites across the city where Pop-Up Testing Units can be stood up quickly in response to a situation or outbreak. A long list of sites has already been identified and the short list will be based on; ensuring geographical coverage of the City; ensuring appropriate, culturally sensitive and effective access to BAME communities, faith groups and people with disabilities and, a mixture of indoor and outdoor provision
- Starting to develop a network of service providers who can provide swabbing in the longer-term as part of a mainstream approach to testing
- Establish testing kit storage facility at New Smithfield Market and arrange delivery system to settings and/or households when rapid deployment of swab kits is needed
- Ensuring all Manchester's residents know when and how to get a test as part of the community and engagement plan (this is being done through a number of channels including GP text alerts, radio, social media and targeted community engagement)
- Refine the approach to mass testing for non-healthcare settings during outbreaks based on lessons learnt from recent outbreaks
- Extend whole care home testing rolling programme to other care facilities
- Continue to encourage employers of essential workers to register with the employer portal for testing employees who are self-isolating.

Leads: Cordelle Mbeledogu (Consultant in Public Health Medicine), Sharon West (Population Health Programme Lead)

3. Increase local contact tracing and environmental health capacity to respond to local outbreaks

- Draw down resources from the Greater Manchester Hub and mutual aid from neighbouring boroughs and explore what additional contact tracing and data analyst capacity is required locally / at GM level to follow up index cases and contacts that have not been successfully contacted via the National system
- Confirm which staff from other teams within City Council can assist with contact tracing and arrange training;
- Look at agency staff to backfill posts in Environmental Health (EH) and look at Out of Hours (OOH) working enhancements for the EH contact tracing team to cover weekend working;

- Continue to build on the excellent working relationship between EH and the MLCO in situations where EH are dealing with a workplace situations, MLCO to do contact tracing if required to free up more time for EH to deal with the workplace and outbreak management
- Ongoing engagement with stakeholders to secure support for the contact tracing process where additional help might be needed e.g. in specific settings or with complex cohorts; and carry out scenario planning for identified high risk locations.
- Convene Outbreak Control Team (OCT) Meetings for significant outbreaks, building on the learning from care homes and other settings over the past six months

Leads: Sarah Doran (Consultant in Public Health, Health Protection), Sue Brown (Principal Environmental Health Officer), Diane Cordwell, Manager MLCO)

4. Develop and implement community engagement plans for targeted work in specific areas and with specific groups

- Community engagement plans will be developed for targeted work with geographically based communities (Medium Super Output Areas), as well as communities of identity or experience that have been identified as high risk or where data suggests new or emerging clusters of infection
- Plans will include a mixture of universal and targeted communications, and more intensive engagement work to promote key public health messages, increase access and uptake of testing and build trust and rally the support of communities.
- Health Development Co-ordinators and Integrated Neighbourhood Team Leads from the Manchester Local Care Organisation will work with Manchester City Council Neighbourhood Leads to deliver an agreed programme of activities supported by the VCSE, faith leaders, GP leaders and communities themselves. This will include
 - face to face (socially distanced) conversations directly with households in areas with the highest transmission rates, supported with audio visual information and easy read written information.
 - targeted engagement in local areas to raise awareness and understand issues being raised including local retailers, food establishments, transport links etc as appropriate for the area
 - enabling and mobilising locally trusted community groups and organisations to do the “door knocking” where possible to facilitate engagement
- Establishment of a Targeted Community Engagement Grant for COVID-19 Health Equity to enable voluntary and community groups to support the work of COVID-19 Health Equity Manchester
 - support from targeted patrols from GMP/Police Community Support Officers (PCSOs)

This programme of work will be reported back to the Member Led Local Outbreak Engagement Sub Group chaired by Councillor Bev Craig, Executive Member for Adult Health and Wellbeing.

Leads: Shefali Kapoor (Strategic Lead Neighbourhoods), Val Bayliss-Brideaux (Head of Engagement, Manchester Health and Care Commissioning), Cordelle Mbeledogu (Consultant in Public Health Medicine), Mark Edwards (Chief Operating Officer, MLCO)

5. Further amplify key communication messages in relation to the new restrictions

- With recent cases amongst young people (18-40) accounting for a significant proportion of our total number of cases, we are working on a GM wide plan aimed at this group of people for three targeted work streams. This will tie together with health messaging and be a concerted campaign across GM;
- Enhance and sustain the well received communications work developed in the run up to Eid;
- Specific targeted comms for the hospitality sector reinforcing their responsibility to ensure social distancing, no loud music, limiting contact with staff and consequences of having positive cases working with partners and business networks
- Re-emphasise the original messaging around safe behaviours and that these all still apply
- Working with public health and engagement colleagues we have designed sets of materials that can be dropped off at people's homes in areas we need to address.
 - The first is a printed leaflet with Easy Read -style icons that explains the key things to say safe (washing hands, wiping surfaces, social distancing, signs of virus and how to get a test). This is the leaflet that will be left with residents once they have been visited by neighbourhood teams.
 - Second leaflet is for those homes where a home visit has not been possible. This leaflet is 2 pages. Page 1 is the same as above and then has a section outlining the 6 key restriction points (not having people over to your home/ garden that you don't live with; only socialise with people you live with, 2 households can meet outdoors in a park for example with social distancing etc)
 - The third piece is a digital version of the messages from letter 1, which will be translated into 13 different languages and produced as a jpg. This is so that our community contacts can send them on via email or WhatsApp to their networks in the right language.
- All these assets are at www.manchester.gov.uk/resourcehub for all partners and VCS groups to use.

Additionally we hope that the teams making house visits will also be able to show or play the series of films we have already made in translated languages around staying well and key COVID-19 information. These films are all on our online community resource hub. Feedback from our neighbourhood contacts is that this resource has worked really well and that they would like more materials added to it.

This work on the 10 point plan will supplement the overall communications plan agreed in the COVID-19 outbreak communication strategy, agreed at the Local Outbreak Engagement Sub Group of Health and Wellbeing Board.

Leads: Alun Ireland (Head of Strategic Communications), Penny Shannon (Communications Business Partner)

6. Inform the hospitality sector on the new guidance and regulations when they are agreed

- Joint operation between GMP and MCC Compliance and Enforcement Team to commence - **this is happening on a weekly basis**
- Target enforcement action on premises who are repeatedly not complying with advice including the use of directions to close premises in the worst cases- **directions have been used twice up to 14 August 2020**

Leads: Fiona Sharkey (Head of Compliance, Enforcement and Community Safety)

7. Continue to support residents and patients who are clinically vulnerable and respond to the evolving guidance on shielding

- Letter to all patients who are shielding was issued week commencing 20th July reiterating the government letter (i.e. pause of shielding on 31st July) but also reinforcing that local support is still available for those who need it
- Text via GP rapid communications system going out to all shielded patients week commencing 3rd August 2020 to clarify the restrictions
- Follow up phone calls to take place with all those that were in receipt of support from government to understand support needs

Leads: Dr Manisha Kumar (Medical Director, Manchester Health and Care Commissioning)

8. Provide advice to organisers of events that were planned for August

The following physical events that had been planned to take place in August have been cancelled. However virtual events will still take place for some (e.g Pride).

- Manchester Caribbean Carnival;
- VJ Day;
- Manchester Pride

Planning in place to develop the strategy beyond September.

Leads: Fiona Worrall (Strategic Director Neighbourhoods), Neil Fairlamb (Head of Parks, Leisure, Youth & Events)

In addition, we are:

- Working with key VCSE and community partners, GMP and others to support and help deliver key engagement messages and a draft statement is being prepared in relation to Pride
- Creating appropriate materials partners can share on their networks and use with their contacts
- Working with Ocean (digital signage across the city) to change messaging as required over the course of the weekend if parts of the city centre become busy
- Working with media partners to spread the message outside of Manchester that no events will be taking place in the city to discourage people coming

9. Plan now for the return of students and pupils to universities and schools in September

Universities

- Initial discussion at Student Strategy Partnership (SSP) meeting in July.
- Pre-SSP meeting with Public Health, Universities and Neighbourhood Teams to take place on 10th August
- Action plan will be agreed with the Universities that will also include COVID-19 Secure accommodation arrangements;

In addition we are:

- Working with Universities to agree local outbreak management response processes and contact tracing arrangements
- Securing a testing site near to the Universities to make it easier for students to get tested. One of the five proposed fixed Local Test Sites (LTS) in Manchester is walking distance from the main university campuses (Denmark Road). We are working to secure responsive sites across the City which will include sites specifically for use by students and staff if mass testing was required for an outbreak and/or evidence of increasing transmission among students.
- Working to ensure systems are in place to support students to isolate with humanitarian support where required
- Coordinating and leading a Greater Manchester meeting on 14th August to share COVID-19 prevention and response work being undertaken in Manchester, Salford and Bolton and to coordinate joint work where appropriate
- Working with GM and local comms leads and University comms leads to agree communications approach with students
- Working with Manchester Student Homes particularly in relation to Off Campus accommodation and engagement with landlords

Schools

- Meetings taking place between the Education team, Public Health, and Contact Tracing Team to document robust pathways for responding to notifications of cases linked to schools setting and ensuring timely flow of information between Manchester and GM contact tracing hub.
- Schools/settings will have step by step guidance on infection prevention and control and how to access support.

- Plans to attend head teacher local meetings to answer questions on infection prevention and control and contact tracing process.
- Public health will attend meetings with trade unions representing school staff in September to answer questions.
- Schools have provided risk assessments for September - currently being reviewed by the MCC Health and Safety team.
- Letter sent out via schools to parents/carers requesting that they support the measures schools will put in place to prevent infection.
- FAQ about school attendance in September and measures schools will put in place to prevent infection translated into community languages and sent out via different channels. Part of a communication plan
- Work progressing on expectations of schools regarding remote learning offer and continuity of education in the event of pupils being at home.

Leads: Amanda Corcoran (Director of Education), Fiona Worrall (Strategic Director Neighbourhoods) , Sarah Doran (Consultant in Public Health)

10. Consider the suite of contain measures currently being developed for Greater Manchester and apply them as necessary to the local situation in Manchester, ensuring collaboration with adjacent authorities

This section of the plan will be updated when the measures are agreed. The intention is to ensure that in advance of Autumn and Winter, planning and support work can take place with care homes and hospitals to minimise the pressure on these settings, alongside plans to prevent transmission in the community.

Lead: David Regan (Director of Public Health)